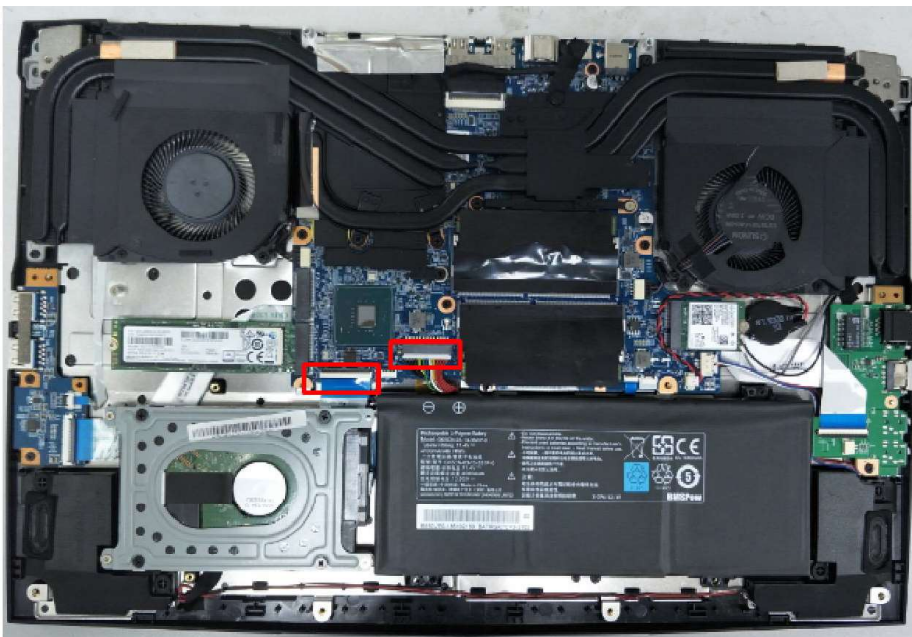




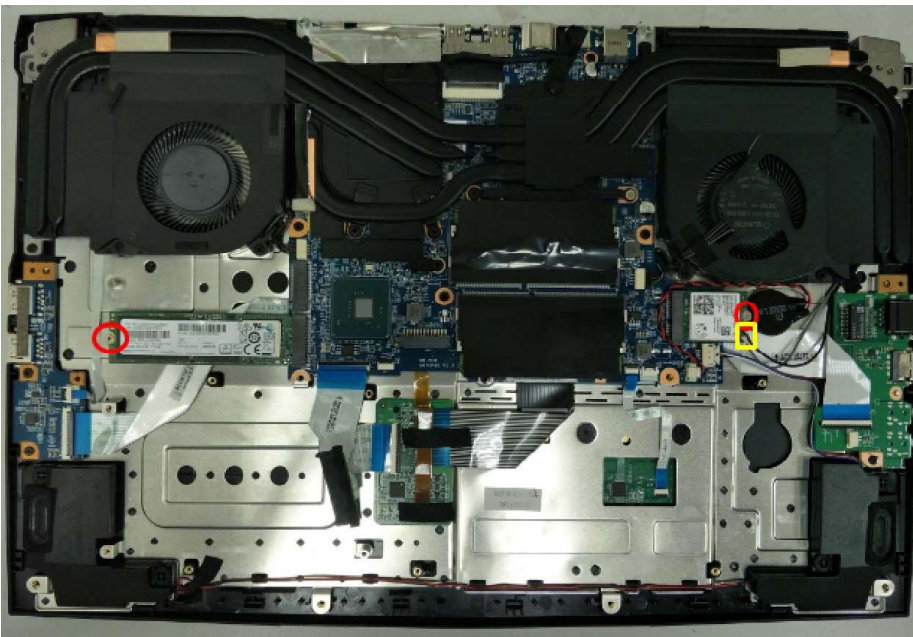
1. Unfasten twelve screws and take out the bottom cabinet.



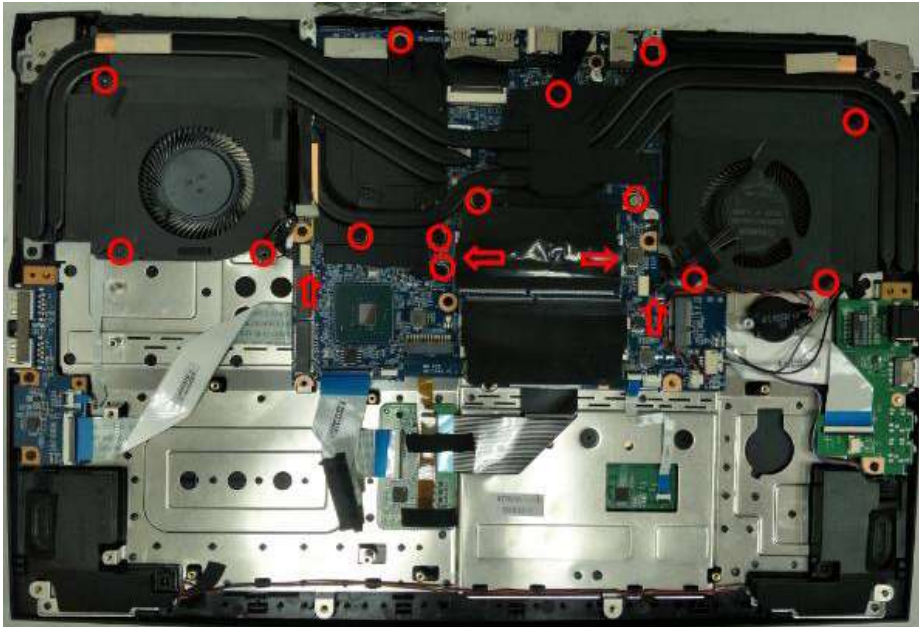
2. Unfasten cables



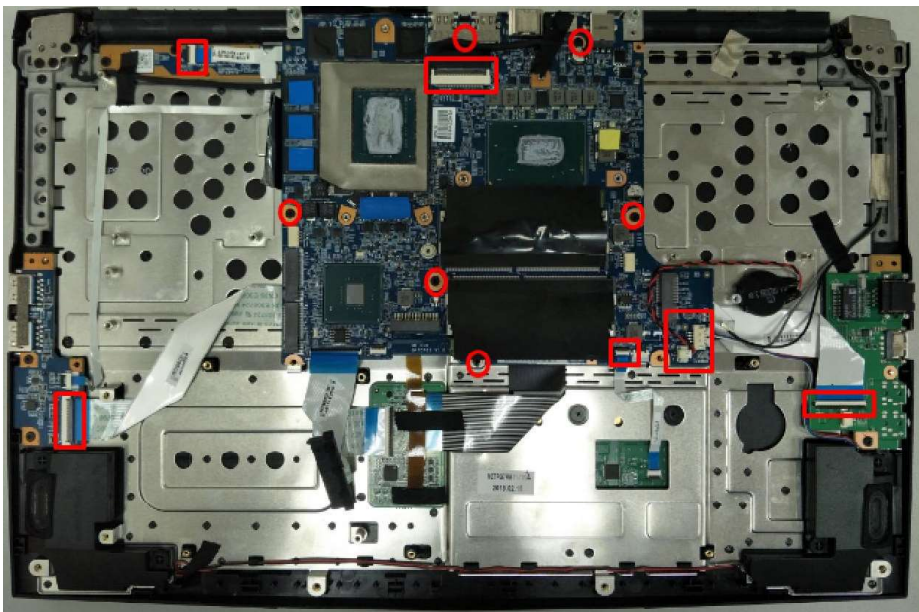
3. Unfasten seven screws and pull out the battery, HDD module



4. Unfasten two screws disconnect the wlan antenna. take out the SSD,WLAN



5. Unlock the RAM and take out the RAM. Unfasten fourteen screws of the FAN and the thermal module. Disconnect the cable of the Fan then remove them



6. Unfasten six screws & cable, take out the M/B